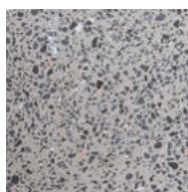


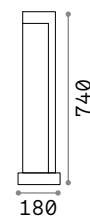


Titano

Porous resin body. Matt black varnished metal base and diffuser's detail. Downward light emission. Integrated LED source.



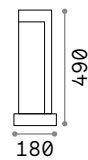
LED LED source 3000/4000 K, 50.000 h life.



IP55

9,220 Kg / 0,0540 m³
LED 9W / 430/450 lm

246987 ■ Granite 3000K
187327 ■ Granite 4000K



IP55

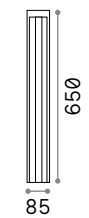
6,800 Kg / 0,0377 m³
LED 9W / 430/450 lm

246994 ■ Granite 3000K
157856 ■ Granite 4000K

Kurt

Powder-coated aluminium base and body. Clear glass diffuser. Downward lights emission. Available finishes: anthracite, white, coffee, grey or black.

LED LED source 3000/4000 K, 30.000 h life.



IP54

1,930 Kg / 0,0060 m³
LED 12W / 1200/1250 lm

| | | | | | |
|--------|------------|-------|--------|------------|-------|
| 306841 | White | 3000K | 294025 | Anthracit. | 4000K |
| 294049 | White | 4000K | 306872 | Black | 3000K |
| 306865 | Grey | 3000K | 293172 | Black | 4000K |
| 294032 | Grey | 4000K | 306858 | Coffee | 3000K |
| 306834 | Anthracit. | 3000K | 294001 | Coffee | 4000K |

